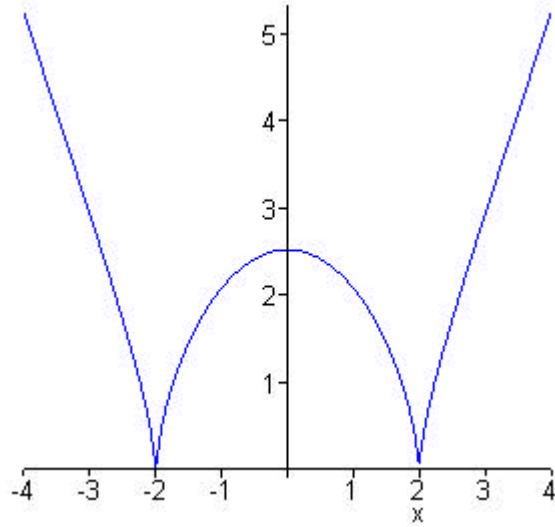




4. The graph of the function  $f(x) = (x^2 - 4)^{2/3}$  is depicted below.



- Determine all  $x$ -intervals over which  $f(x)$  is increasing.
  - Determine all  $x$ -intervals over which  $f(x)$  is decreasing.
  - Determine if the function is even, odd, or neither. (Be sure to justify your answer).
5. Determine the domain of the function  $g(x) = \frac{2}{x^2 + x - 6}$ .